

Township 2 South Range 36 East Union County, Oregon.

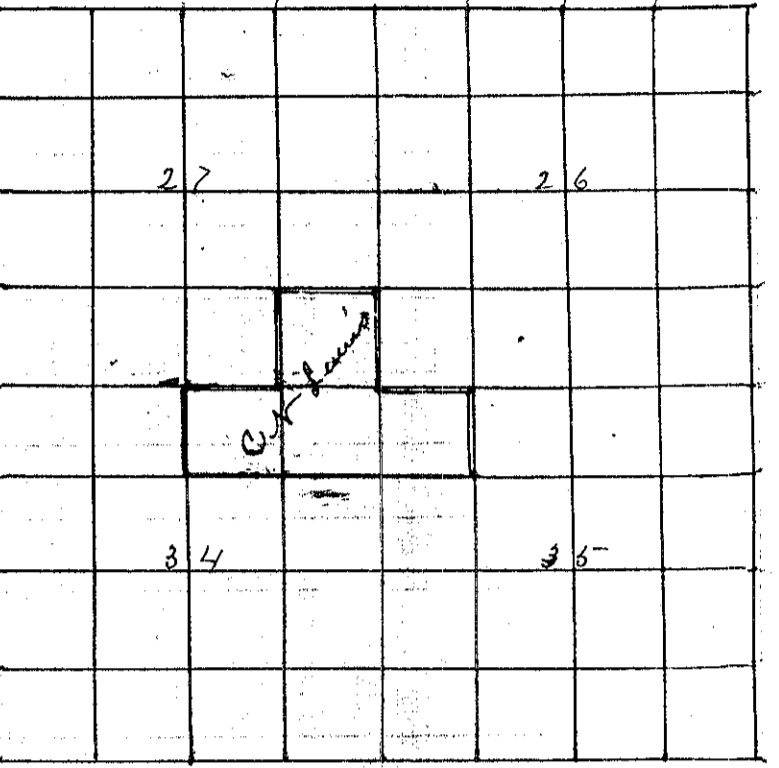
C N Lewis May 4th 1891
Chairman

Henry Belved and B M Francis

Markers

Arthur Curtis

Commencing at the Sec Corner of
Secs 26, 27, 34 and 35 and running
Thence N Var 20° East



- 20 Set Temporary Stake Thence N
- 20 55 intersected 1/4 sec corner 98 links North
from thence back on true line
- 20 27 Set corner to NE corner of NW 4 of NE 4
Sec 34 Thence East
From Sec Corner to 26, 27, 34, and 35 South 20°
- 40 40 Intersected 1/4 sec corner Thence North on true line
- 20 20 Set SE corner of SE 4 of SE 4 sec 34
From Sec Corner E Var 20° E
- 40 98 Intersected 1/4 sec corner 84 links to the South from thence back on true line
- 20 49 Set corner to NE corner of NW of NW 4 sec 35 Thence South
- 20 20 Set corner to SE corner of NW 4 of NW 4 Sec 35 Thence west on Random
- 20 46 Set Temporary Stake Thence N
- 40 55 Set Temporary Stake for SW corner of NW 4 of NE 4 sec 34
From the 1/4 sec corner between Sec 27 and 34 South
- 20 20 Set corner to SW corner NW 4 of NE 4 Sec 34 Thence East on true line
- 20 27 Set corner to SE corner of NW 4 of NE 4 Sec 34 Thence East
- 20 27 Set corner to SE 4 of NE 4 of NE 4 Sec 34 Thence East on true line
- 20 46 Set corner to SE corner of NW 4 of NW 4 Sec 35
From Sec Corner of 26, 27, 34 and 35 N
- 40 44 Intersected 1/4 sec Corner back on true line
- 20 22 Set corner NE corner of SE 4 of SE 4 Sec 27 Thence West
- 20 27 Set corner to NW corner of SE 4 of SE 4 Sec 27 Thence S
- 20 22 To the SW corner of SE 4 of SE 4 Sec 27

All points being designated by Rocks properly marked and named
of Rocks

J L Curtis
County Surveyor