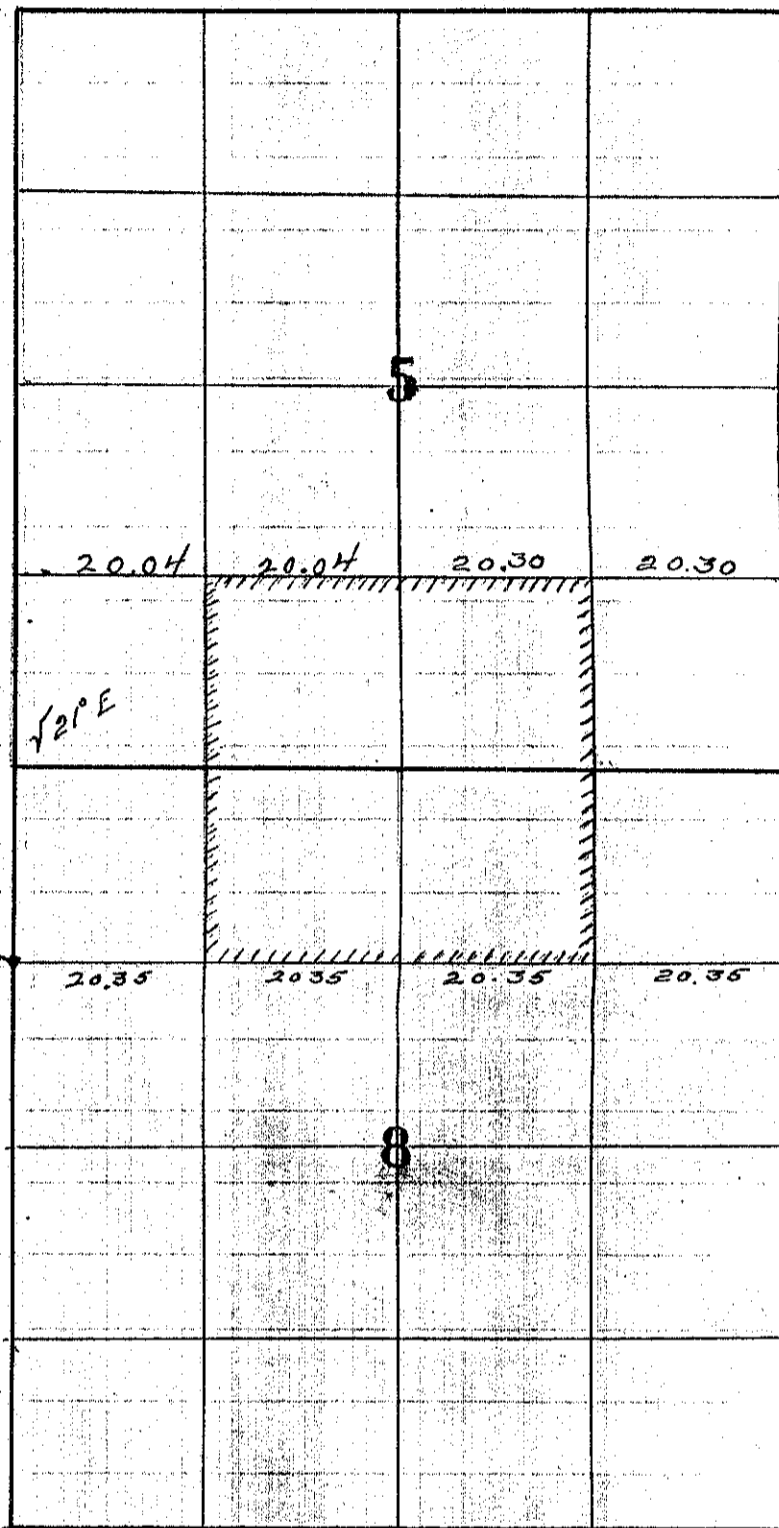


No 136

Township 2 South Range 40 East Union County, Oregon.

CHAINS. LKS.

Wm and Solomon Neville
 This survey was made
 June 16th 1891 as follows
 Beginning at a stake set
 by J. W. Kimbrell Co. Surveyor
 being the S.W. Cor. of the N.W. 1/4
 of the N.W. 1/4 of Section 8



20 00 Set temporary 1/16 corner

40 00 " " 1/8 "

60 00 " " 1/16 "

81 42 Intersect Section line between
 Secs 8 & 9 -- 54 links South of 1/8
 cor. Thence West on true line T 21° E

20 35 Set 1/16 corner Point of beginning

40 70 " 1/8 "

61 05 " 1/16 cor

Begin at Sec cor to Secs 5 & 8
 on East boundary of Secs
 North on random line

20 00 Set temporary 1/8 cor

39 26 Intersect 1/4 Sec cor on line
 Thence South on line T 21° E

19 63 Set 1/8 corner

Thence West on Random line T 21° E

9 47 Cross Little Indian Creek.

20 00 Set temporary 1/16 cor.

40 61 Intersect corner set by Co Surveyor Kimbrell 58 links
 North of corner. Thence East on true line

20 30 Set true 1/16 corner. Thence from corner on same line
 being the last named corner as set by Co. Surveyor Kimbrell
 West on Random line T. 21° E

20 00 Set temporary 1/16 corner

40 08 Intersect Section line between Secs 5 & 6 33 links
 South of 1/8 corner set by Co Surveyor Kimbrell.
 Thence East on True line T. 21° E

20 04 Set true 1/16 cor being the N.W. Cor of the tract
 surveyed