

RECORD OF SURVEY

N^o 157

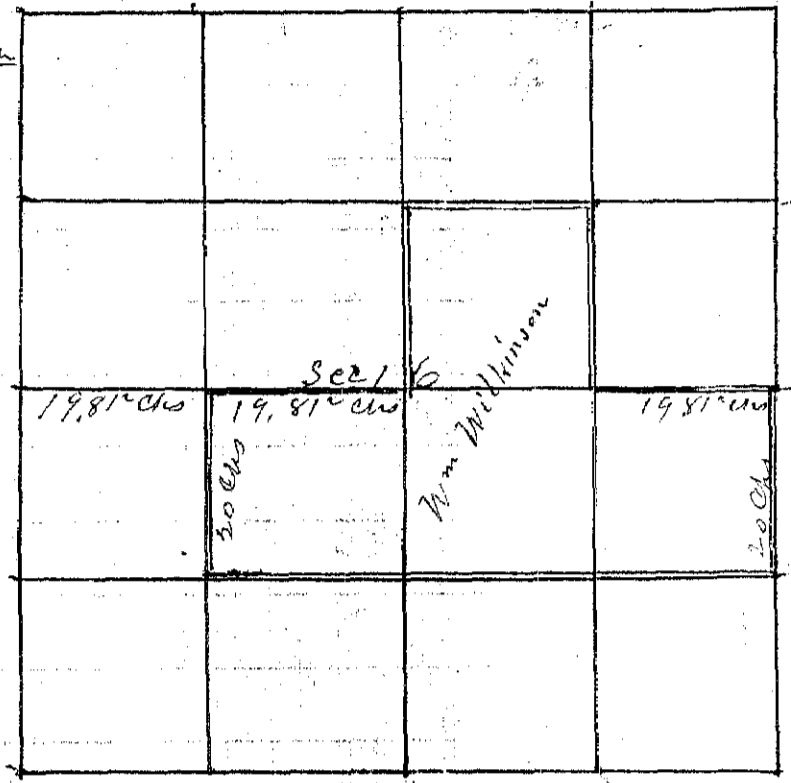
Township 4 South Range 35 East Union County, Oregon.

Wm Wilkinson

This survey was made July 28th 1891 as follows

Beginning at the 1/4 sec corner between Sec 15 and 16 and running thence W on Random line

- 20 Set Temporary Corner
- 40 " " "
- 60 " " "
- 79 26 Intersected 1/4 sec corner between Secs 16 and 17 82 lks south of the corner



Thence back on true line Var 20° 30'

- 19 81² Set corner to NW corner of N 24 S 20 4 Sec 16
- 19 81² Set corner to NE corner of N 24 S 20 4 Sec 16
- 19 81² Set corner to NW corner of N 24 N 24 Sec 16
- 19 81² the 1/4 sec corner between Secs 15 and 16
- From the NW corner of the N 24 S 20 4 Sec 16 S Var 20° 30'
- 20 Set corner to SW corner of N 24 S 20 4 Sec 16

J. L. Curtis
County Surveyor