

RECORD OF SURVEY

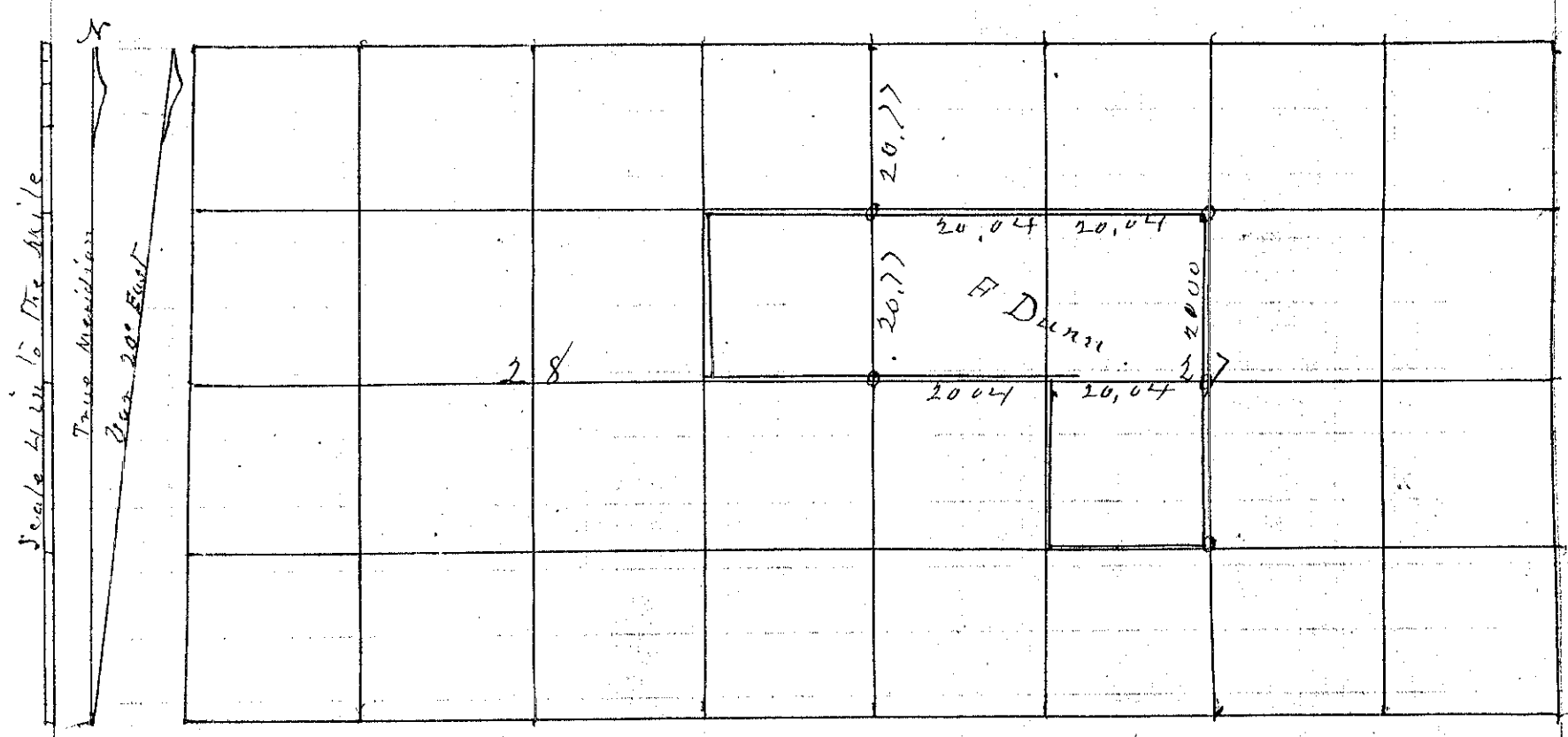
283
1891

No 158

Township 3 South Range 35 East Union County, Oregon.

CHAINS
LKS.

Frank Damm



This Survey was made July 27th 1891 as follows "to wit,"

Beginning at the corner of Sec 21, 22, 27 and 28 thence S on sec line Var 20° East

20 Set temporary 1/8 corner thence S

21 54 Intersected 1/4 sec corner between Sec 27 and 28 thence back on sec line

20 77 Set corner to the NW corner of SE⁴ of NE⁴ sec 28
From the 1/4 sec corner between Sec 27 and 28 ^{East on random} Var 20° East

20 Set temporary 1/16 corner thence E

20 Set " centre of sec thence East

20 Set " 1/16 corner thence East

20 16 Intersected 1/4 sec corner between Sec 26 and 27 thence back on true line

40 08 Set Post for centre of Sec A Pine tree 20 in in diam bearing N 84° East
38 lks distant

From centre of Sec 27 N Var 20° East

20 Set Post and mound of Rock thence N Var 20° East

40 08 Intersected corner to NW corner of SW⁴ of NW⁴ Sec 27
From 1/4 sec corner between Sec 27 and 34 N Var 20° East

20 Set temporary 1/16 corner thence N

20 28 Intersected centre of Sec 27 back on line

20 14 Set corner to the SE corner of NE⁴ of SW⁴ Sec 27

J L Curtis
Surveyor