

RECORD OF SURVEY

289
1892

No 1614

Township 2 South Range 38 East Union County, Oregon.

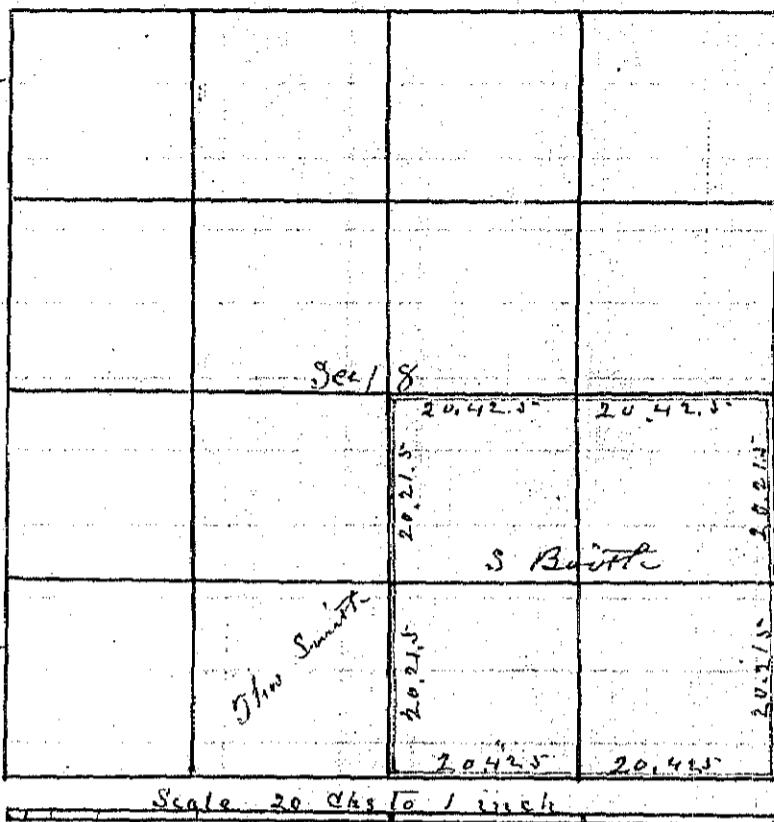
Sam Booth June 8th 1892

I commenced this survey from the SE corner of Sec 18 T. 2. S. R. 38. E
Thence N Var 20° E

20 00 Set Temporary corner for 1/8 corner
Thence N

40 43 Intersected the 1/4 Sec corner between
Secs 17 & 18 Thence back on true line

20 21.5 Set 1/8 corner for the NE corner of
the SE^{1/4} of SE^{1/4} Sec 18 a stake with
two small bearing trees to the N
From the SE corner of Sec 18 W



Scale 20 Chs to 1 inch

40 85 Intersected the 1/4 Sec corner between Sec 18 & 19 Thence N

40 43 Set Temporary stake for centre of the section
From the 1/4 Sec corner between Secs 17 & 18 West Var 20° E

20 00 Set Temporary stake for 1/16 corner

40 85 Intersected Temporary stake for centre of Sec 70 N of stake
Moved to stake and run back East on true line N 89° 50' E

20 42.5 Set corner to 1/16 corner Thence E

40 85 Intersected 1/4 Sec corner between Sec 17 & 18
From the Centre of the South on true line S 0° 30' W

20 21.5 Set corner for S Booth and John Smith at the NE corner
of the SE^{1/4} of SW^{1/4} Sec 18 T. 2. S. Range 38 East T. 2. S.

J L Curtis
County Surveyor

True Meridian
Var 20° 30' E