

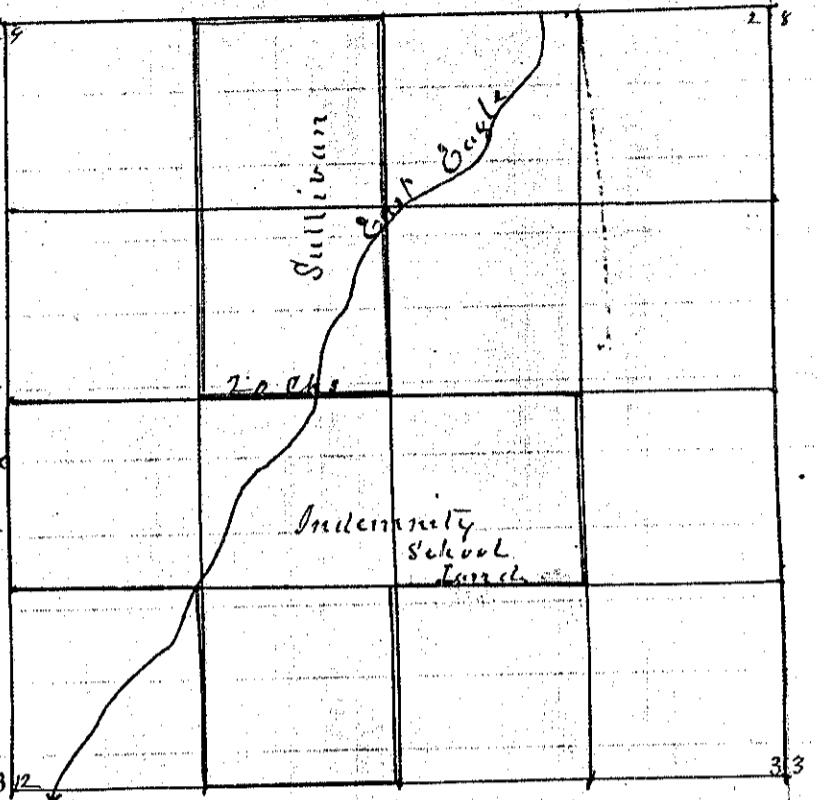
175

Township 6 South Range 44 East Union County, Oregon.

J W Murphy et al May 11<sup>th</sup> 1893

This Survey was made commencing  
at Sec Corner between Sec's 28-29-32 & 33  
and running West on a line Var 19°30'E  
to Bank of East Eagle  
Across the Creek  
Set Stake for Corner to SW Corner  
of SE<sup>1</sup> of SE<sup>4</sup> Sec 29 from which a Pine  
Tree 36 in in Diameter bears N-20°30'W  
30 lts distant

J L Curtis  
County Surveyor



9 07  
10 17  
20 00

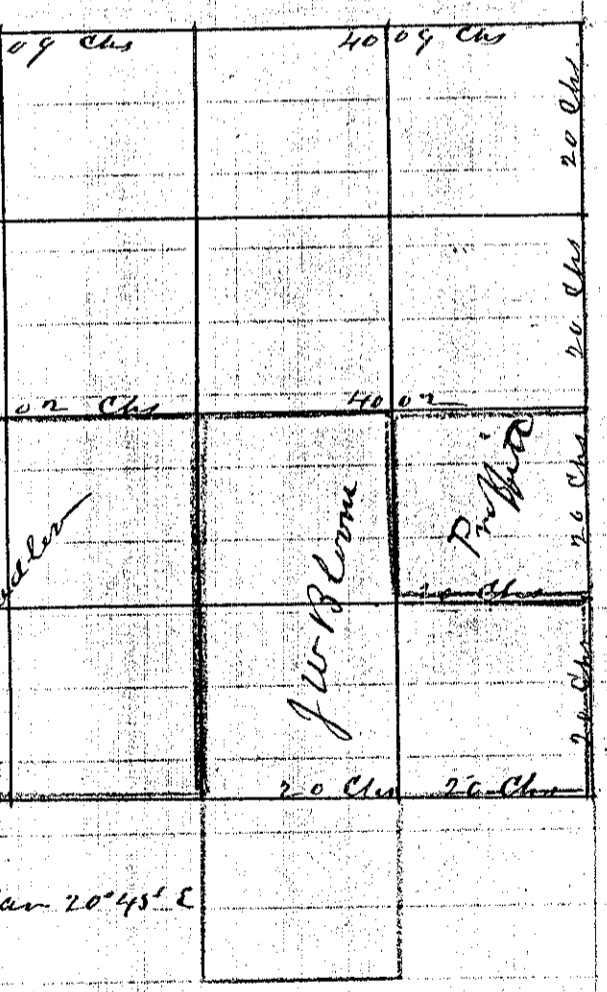
No 176

Township 8 South Range 45 East

J W Bloom, <sup>Don</sup> Proffitt, J H Chandler

Commenced on Range line at corner between Sec 1-6  
7-12 N on Random line with an offset of 25 lts  
to the east Var 19° East

20 00 Set Temporary 1/8 corner  
40 00 " " 1/4 " "  
60 00 " " 1/8 " "  
80 00 Interest Township Corner 26 lts E  
From Township corner South on true line S 90° E  
40 00 Set Granite Rock 16x10x8 for 1/4 Sec corner  
60 00 " " " 16x10x8 " 1/8 " "  
80 00 Interest corner to Sec 1-6-7-12  
From corner to Sec 1-2-35-36 East on North Bdy Sec 1 Var 20°45' E  
40 09 Interest 1/4 corner  
80 18 Interest Township corner  
From the 1/4 Sec corner between Sec 1 & 6 East Bdy of Sec 1 W  
80 04 Interest 1/4 Sec corner between Sec 1 & 2  
East on true line  
40 02 Set Rock 16x12x10 for center of Sec  
60 03 Set Rock for the NW corner of the NE<sup>1</sup> of SE<sup>4</sup> Sec 1



J L Curtis  
County Surveyor