

RECORD OF SURVEY

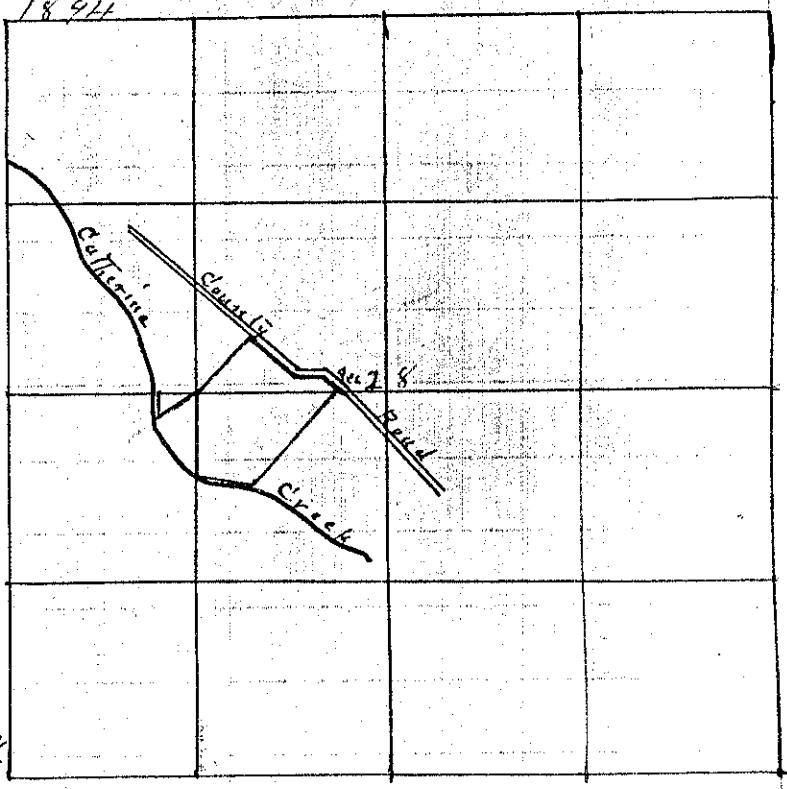
305
1894

No 177

Township 4 South Range 40 East Union County, Oregon.

CHAINS
Lks.

For Moses Love et al. Done Mch 23 & 24 1894
 Commenced at the NW corner of Sec 28 thence S
 15 28 To the north Bank of Catherine Creek thence S
 1 00 ~ ~ South ~ ~ ~ ~ S
 23 72 Set Temporary 1/4 Sec Corner ~ ~
 40 50 Intersect Sec corner 224 lks West
 From the SW corner of Sec 28 North on true
 line
 40 25 Set 1/4 Sec corner between Secs 28 & 29
 marked with Chisel on a ledge of Rock
 near the eastern terminus of the Cliff of Rock



Description of what is known as the McDaniel Tract

Commencing at the SE corner of the SW 1/4 of NW 1/4 Sec 28 and running thence East Var 19° 30' East
 15 41 To Station No 1 Centre of the County Road thence N 55° 30' W
 2 22 ~ ~ ~ 2 ~ ~ ~ ~ ~ ~ West
 2 90 ~ ~ ~ 3 ~ ~ ~ ~ ~ ~ N 40° W
 5 87 ~ ~ ~ 4 ~ ~ ~ ~ ~ ~ S 43° W
 8 00 ~ Place of beginning and containing 4.2 + Acres of Land

Description of Tract of Land sold by Moses Love to ---

Commencing at the SE corner of SW 1/4 of NW 1/4 Sec ²⁸ and running thence S Var 19° 30' East
 8 50 To Station No 1 on the north bank of Catherine Creek thence S 75° East measuring the Creek
 6 50 ~ ~ ~ 2 ~ ~ ~ ~ ~ ~ N 43° East
 13 50 ~ ~ ~ 3 at the South side of County Road thence N 55° 30' W
 2 72 ~ ~ ~ 4 ~ ~ ~ ~ ~ ~ West
 2 90 ~ ~ ~ 5 ~ ~ ~ ~ ~ ~ N 48° W
 5 87 ~ ~ ~ 6 ~ ~ ~ ~ ~ ~ S 43° W
 7 50 ~ The place of beginning and containing 15.5 + Acres of Land

Description of small Tract of Land situated on what is known as Joe Wright's Land

Commencing at the SE corner of SW 1/4 of NW 1/4 Sec 28 and running thence West
 4 00 To the NE Bank of Catherine Creek thence South
 2 50 ~ ~ ~ N 43° East
 4 70 To the place of beginning and containing about 1/2 Acre of Land

J L Curtis
County Surveyor