

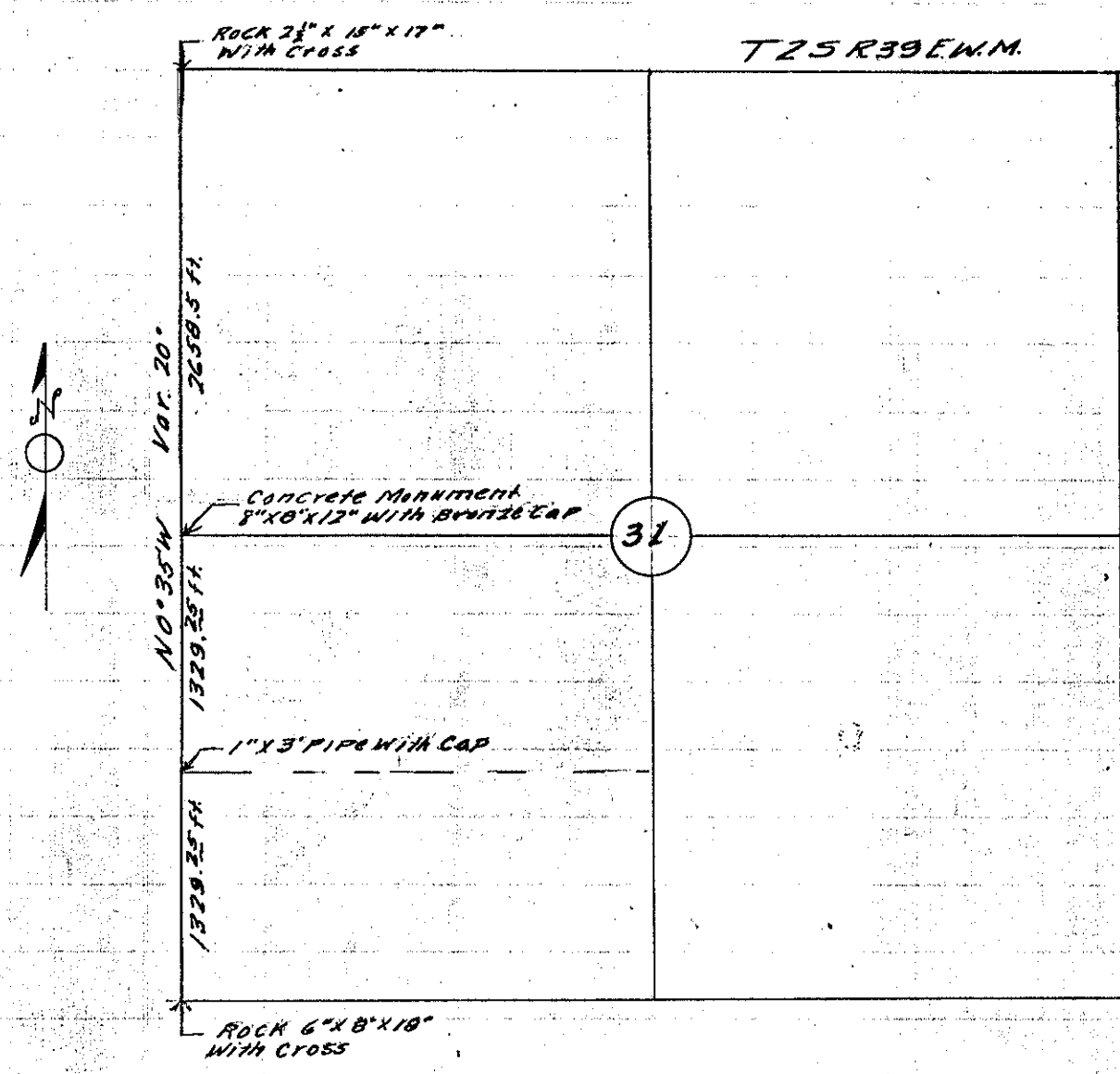
386  
1941

# RECORD OF SURVEY

231

Township 2 S Range 39 E.W.M. Union County, Oregon.

CHAINS. LKS. Survey For John Hancock Mutual Life Insurance Co.,  
SPOKANE, WASHINGTON



Work done Jan. 11, 12 & 18 1941

I Commenced at a rock at the S.W. Corner of section 31 T25R39E.W.M.  
 Thence North Var. 20° East, 1320 ft., set temporary 1/8 corner, 2640 ft. set  
 temporary 1/4 corner, 5317 ft., found rock with cross for N.W. corner of  
 section 31, T25R39E.W.M. The true corner was 10 ft. west of temporary  
 line.  
 Thence S 0° 35' E on true line, 2658.5 ft. set concrete monument 8" x 8" x 12"  
 for 1/4 corner, 1329.25 ft. set 1" inch iron pin for 1/8 corner, 1329.25 feet to  
 section corner at place of beginning.

*S.B.M. Morgan,*  
 County Surveyor.