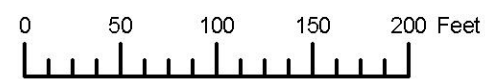


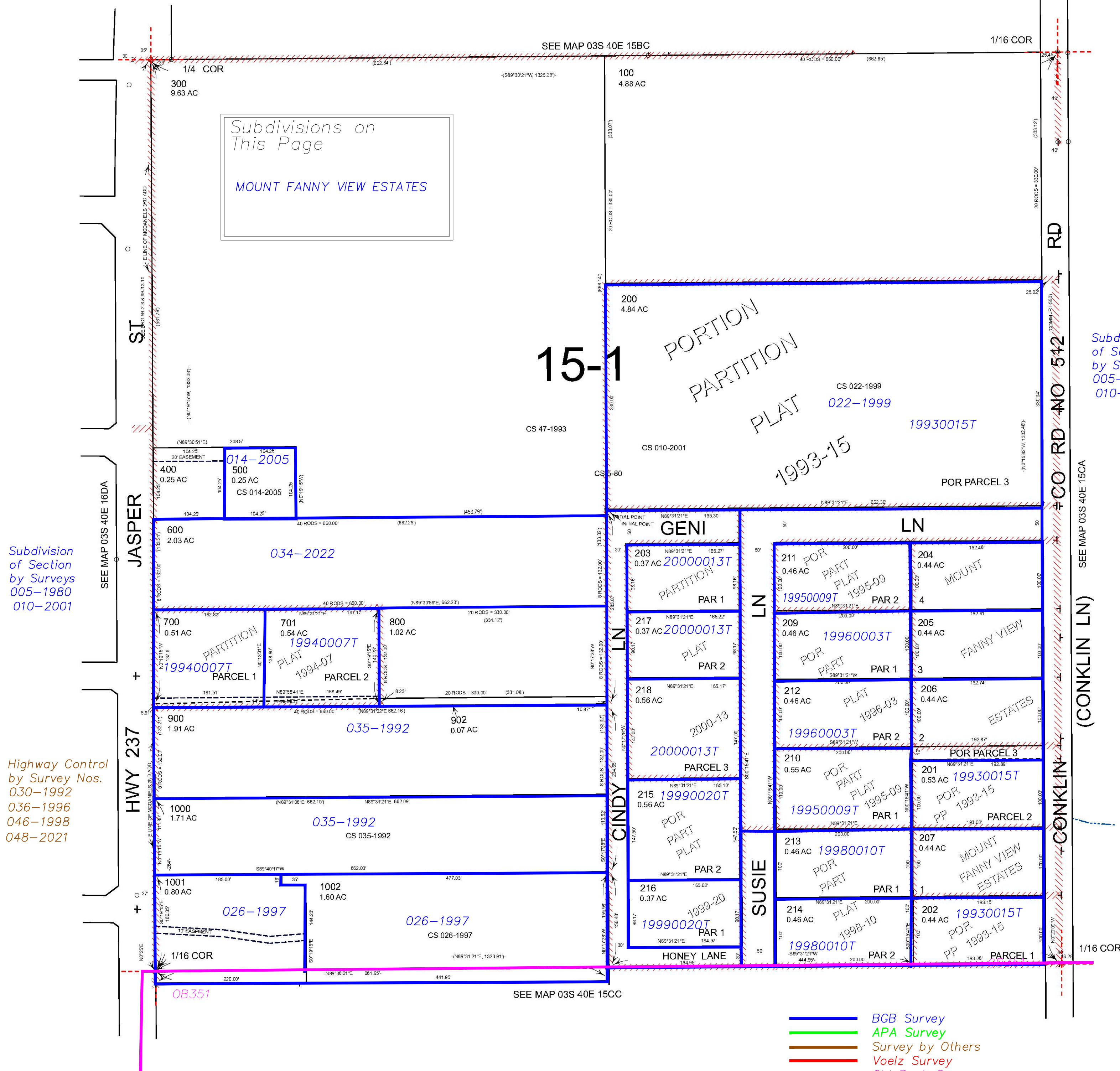
THIS MAP WAS PREPARED FOR ASSESSMENT PURPOSE ONLY



N.W.1/4 S.W.1/4 SEC.15 T.3S. R.40E. W.M.
UNION COUNTY
1" = 100'

03S40E15CB
COVE

Cancelled
208
901



Subdivision
of Section
by Surveys
005-1980
010-2001

Highway Control
by Survey Nos.
030-1992
036-1996
046-1998
048-2021

Subdivision
of Section
by Surveys
005-1980
010-2001

- BGB Survey
- APA Survey
- Survey by Others
- Voelz Survey
- Old Book Survey

Revised: MA
09/25/2019

COVE
03S40E15CB