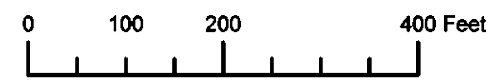


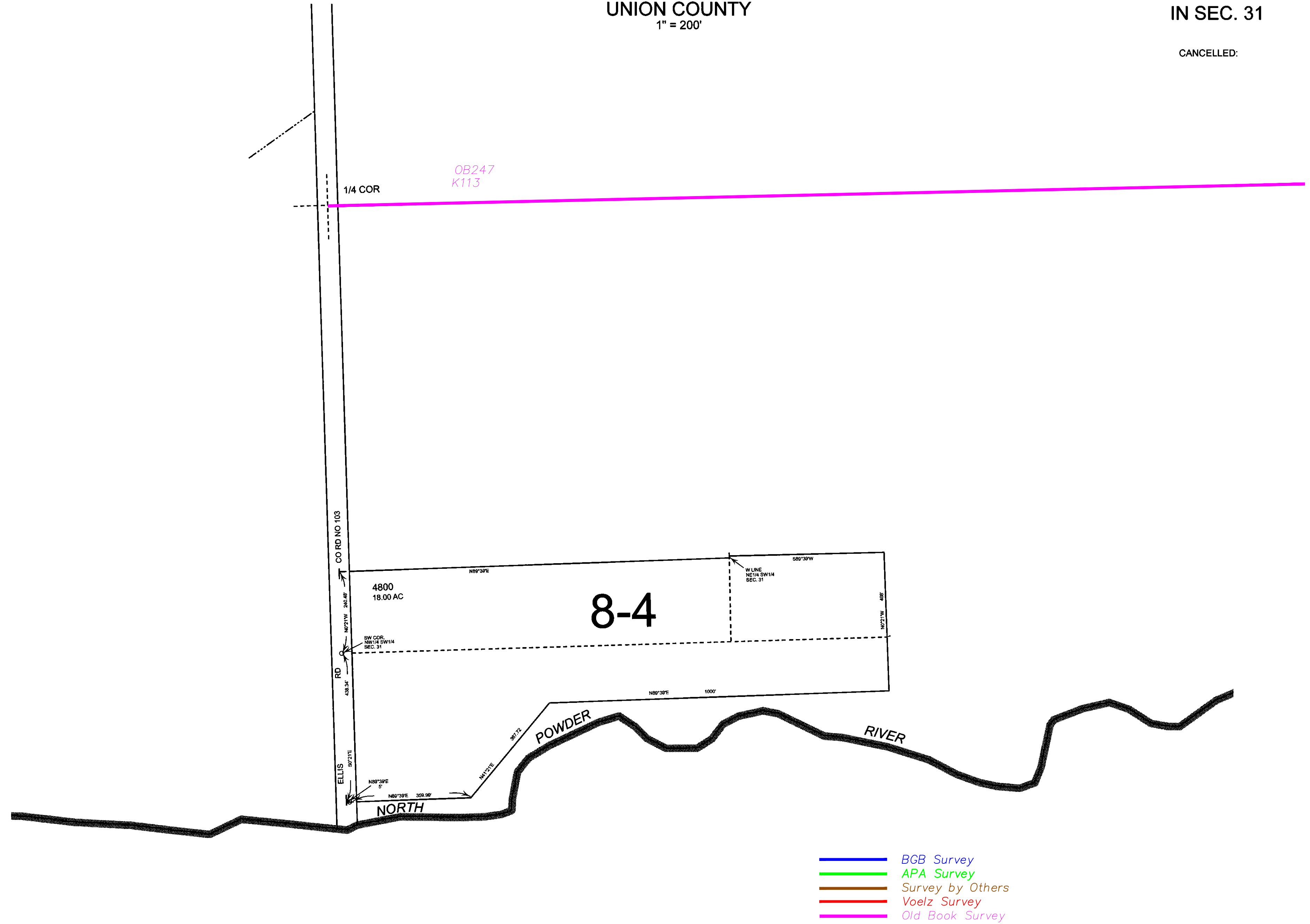
THIS MAP WAS PREPARED FOR ASSESSMENT PURPOSE ONLY



DETAIL MAP NO. 5
T.6S. R.39E. W.M.
UNION COUNTY
1" = 200'

06S39E
DETAIL MAP NO. 5
IN SEC. 31

CANCELLED:



Revised: SH
11/13/2012

IN SEC. 31
DETAIL MAP NO. 5
06S39E