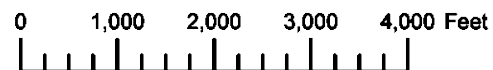


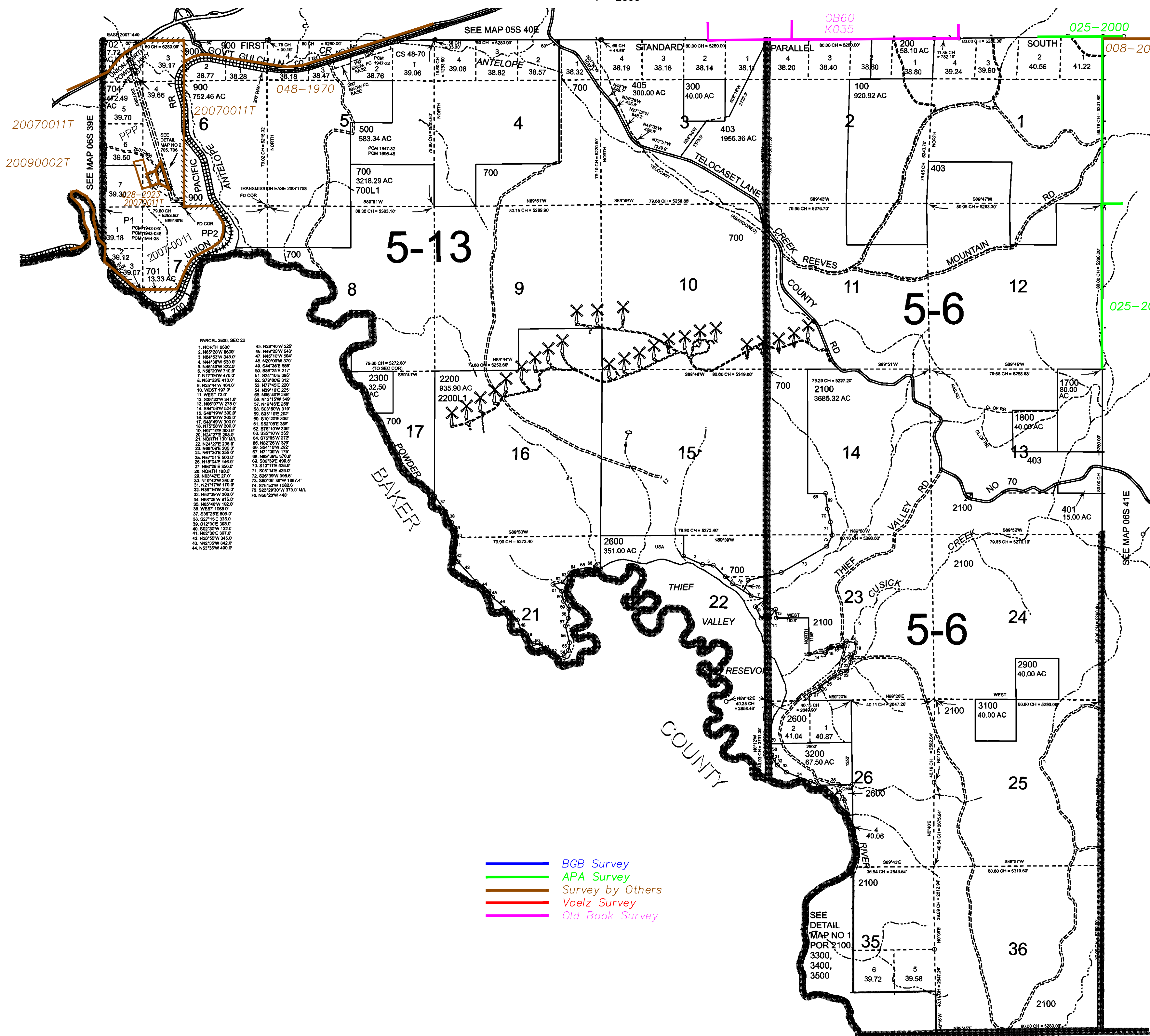
THIS MAP WAS PREPARED FOR ASSESSMENT PURPOSE ONLY



T.6S. R.40E. W.M. UNION COUNTY
1" = 2000'

06S40E

Cancelled
100M1
400
402
404
406
600
703
800
1000 THRU
1600
1900
2000
2001
2101
2400
2500
2700
2800
3000



PARCEL 2600, SEC 22

1. NORTH 666.7'	45. N23°40'W 225.0'
2. N85°29'W 660.0'	46. N48°22'W 548.0'
3. N44°33'W 343.0'	47. N45°10'W 504.0'
4. N44°30'W 530.0'	48. N20°00'W 370.0'
5. N46°43'W 322.0'	49. S44°35'E 560.0'
6. N66°20'W 710.0'	50. S88°25'E 217.0'
7. N77°00'W 470.0'	51. S34°10'E 380.0'
8. N53°25'E 410.0'	52. S73°00'E 312.0'
9. N22°44'W 404.0'	53. N77°45'E 220.0'
10. WEST 197.0'	54. N50°10'E 250.0'
11. WEST 73.0'	55. N06°40'E 248.0'
12. S33°23'W 341.0'	56. N1°15'W 540.0'
13. N69°07'W 278.0'	57. N19°45'E 258.0'
14. S84°53'W 528.0'	58. S03°50'W 310.0'
15. S45°19'W 500.0'	59. S35°10'E 200.0'
16. S80°50'W 265.0'	60. S10°20'E 330.0'
17. S48°49'W 300.0'	61. S52°00'E 300.0'
18. N75°58'W 300.0'	62. S78°10'W 330.0'
19. N87°11'E 300.0'	63. S35°10'W 350.0'
20. N24°27'E 298.0'	64. S75°00'W 272.0'
21. NORTH 152.0' M.L.	65. N54°10'W 330.0'
22. N24°27'E 298.0'	66. N82°20'W 320.0'
23. N69°06'E 293.0'	67. N54°10'W 330.0'
24. N81°30'E 255.0'	68. N7°00'W 170.0'
25. N61°01'E 340.0'	69. N88°30'E 450.0'
26. N18°04'E 146.0'	70. S13°11'E 420.0'
27. N69°25'E 350.0'	71. S08°14'E 420.0'
28. NORTH 188.0'	72. S20°39'W 360.0'
29. N03°42'E 27.0'	73. S60°05' 30'W 1987.4'
30. N10°42'W 340.0'	74. S78°52'W 1082.6' M.L.
31. N21°17'W 170.0'	75. S20°29'W 373.0' M.L.
32. N89°10'W 260.0'	76. N56°20'W 448.0'
33. N52°30'W 360.0'	
34. N69°25'W 615.0'	
35. N65°48'W 192.0'	
36. WEST 1268.0'	
37. S30°22'E 800.0'	
38. S27°15'E 335.0'	
39. S1°00'E 360.0'	
40. S02°30'W 132.0'	
41. N02°30'E 307.0'	
42. N20°50'W 345.0'	
43. N42°35'W 942.0'	
44. N53°30'W 480.0'	

- BGB Survey
- APA Survey
- Survey by Others
- Voelz Survey
- Old Book Survey

Revised: SH
11/05/2013

06S40E